



FARM TECHNOLOGY



**PRODUCT KNOWLEDGE SESSION**

---



**PRODUCT KNOWLEDGE SESSION**



# BENEFITS OF SILAGE

---

## WHY IT THIS PROFITABLE ...

---

- » Less dependent on weather conditions
- » Quality as good as clamp silage, usually better.
- » Lower aerobic spoilage losses compared to clamp

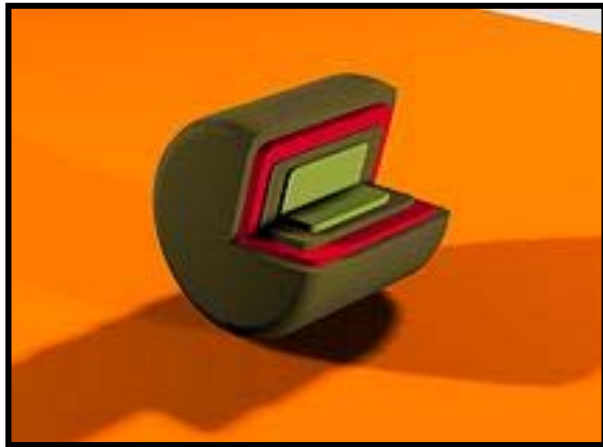
# BENEFITS OF SILAGE

## WHY IT THIS PROFITABLE ...

- Tailored diet
- Limited capital investment
- Flexible storage

# BENEFITS OF SILAGE

## WHY IT THIS PROFITABLE ...



A bale without wrapping keeps only **15%** of the nutritional value on a 6 months timeframe

A bale with wrapping keeps **95%** of the nutritional value on a 6 months timeframe



# THE WRAPPERS

## WHY CHOOSING THIS UNIT...

### HIGH DENSITY STEEL

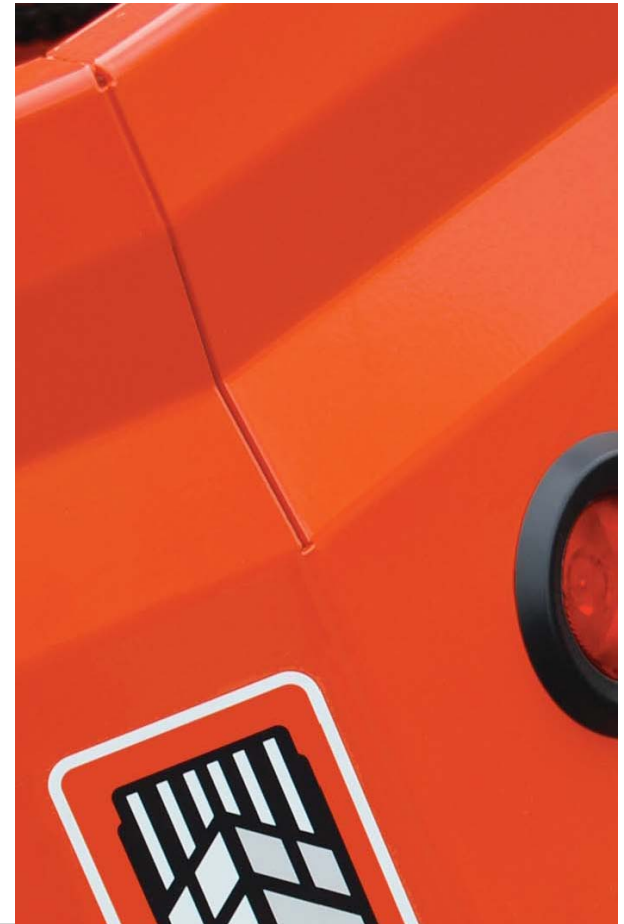
Provides 5 times the stiffness of regular steel and increases the lifespan by 3 times. The final result is a lighter equipment on the road and a stronger piece of equipment at work.



THIS MACHINE WILL LAST



THIS MACHINE WILL KEEP ITS  
RETAIL VALUE





# THE WRAPPERS

## WHY CHOOSING THIS UNIT...

### LASER CUT

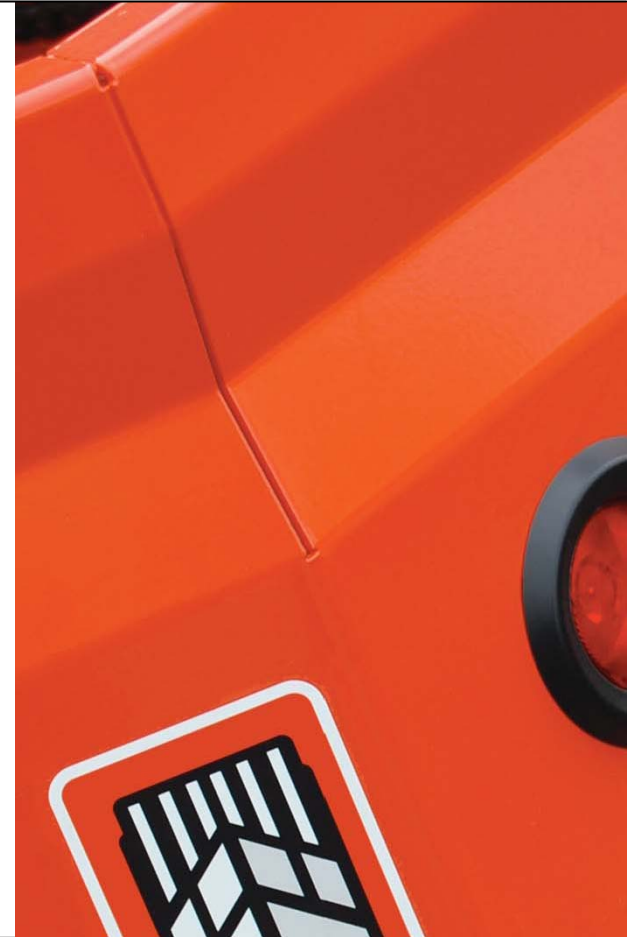
Unbeatable precision of the laser-cut steel provides great features to the final assembly, such as a better overall stiffness, exact positioning of all parts and perfect alignment.



STIFFNESS



PRECISION ASSEMBLY



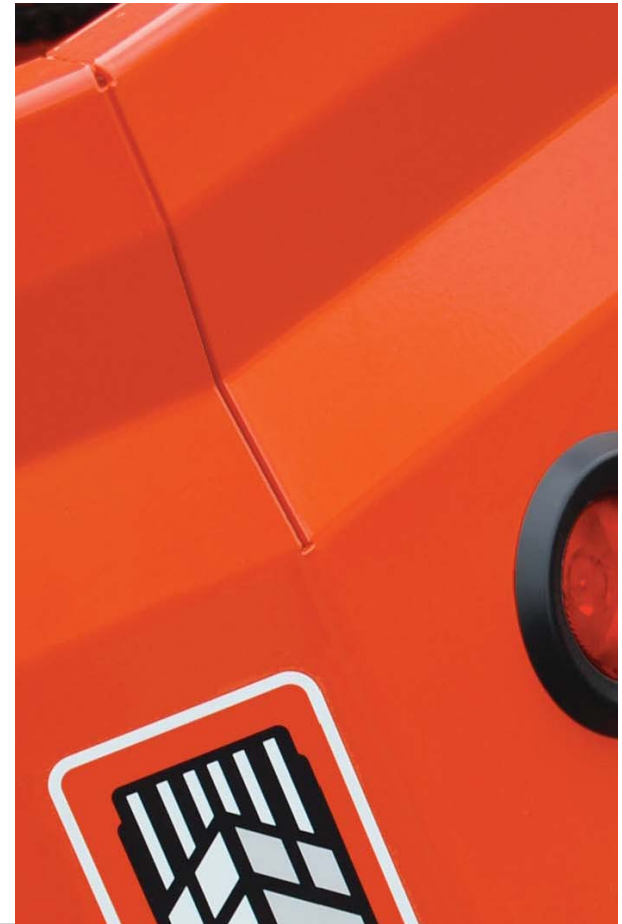
# THE WRAPPERS

## WHY CHOOSING THIS UNIT...

### BAKED POWDER PAINT

The **best** way to protect your equipment throughout the years is total bonding between the steel and the paint and a hardness point that **will not suffer from regular abrasion** : A final result about 100 times harder than regular lacquer paint.

- > NO RUSTY SCRATCHES
- > ENDLESS DEMOS
- > KEEPS ITS VALUE OVER THE YEARS





# THE WRAPPERS

## WHY CHOOSING THIS UNIT...



HASSLE FREE - PLASTIC PUNCTURE-FREE - LIGHT AND EASY

The **RAM System** has been developed in order to surpass all existing systems.

**It is** a standard feature aboard all inline wrappers.

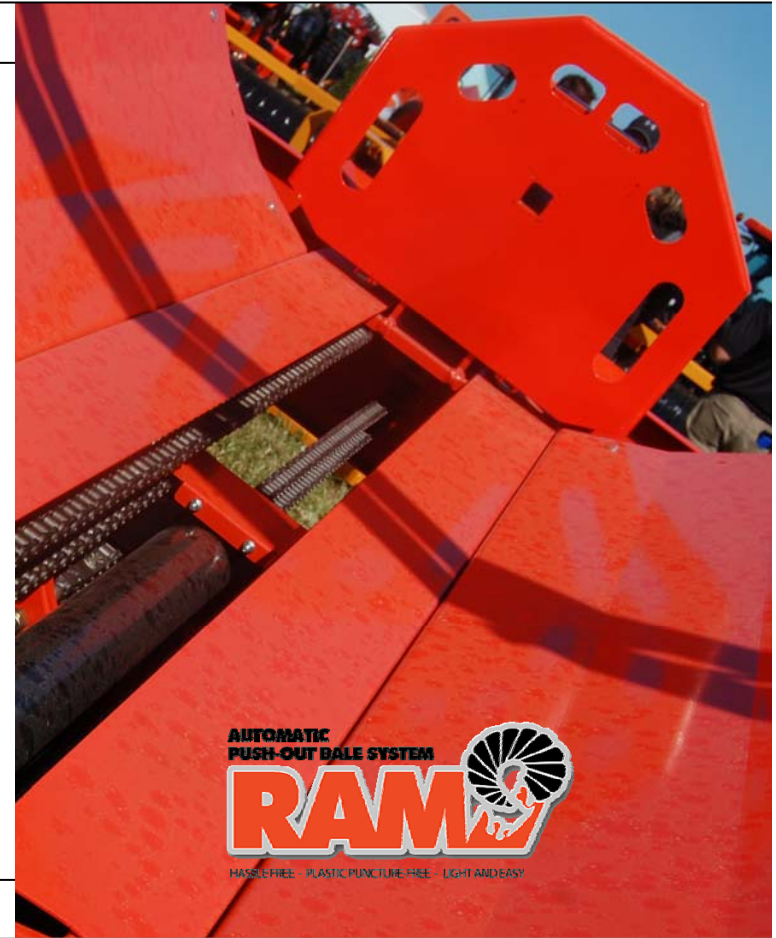
No need to extract any money from your pocket for that feature.

CANAG Farm Technology team developed a light system that ends up the row with a center “ratchet” type pusher that **never failed yet !**

# THE WRAPPERS

## WHY CHOOSING THIS UNIT...

- > Standard feature
- > Lightweight, precise and hassle-free
- > Mounted on everlasting 'Teflon' skates
- > Remote controlled on TOPLINER, PROLINER and ALLINER wrappers.
- > Can be stopped at any moment

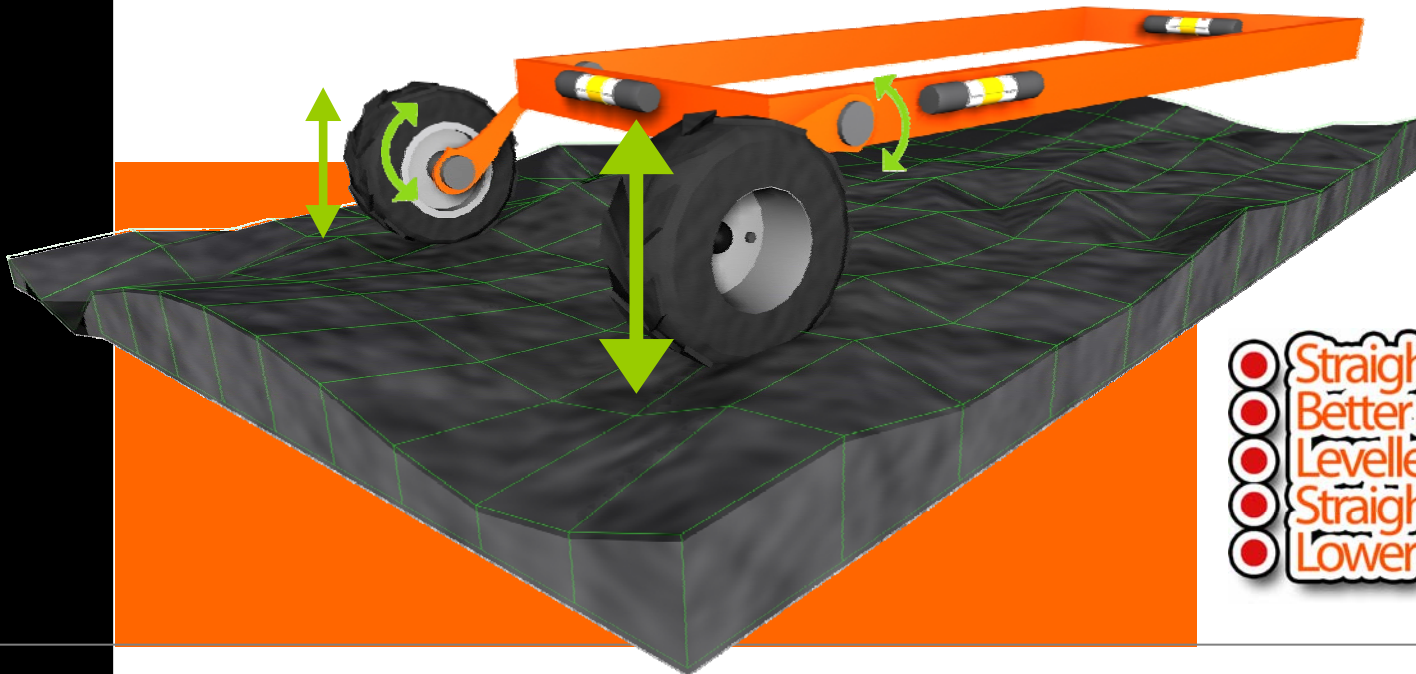


# THE WRAPPERS

## WHY CHOOSING THIS UNIT...



Independent Hydraulic  
Soft Flow Wheel Drive System  
Always square.



- Straight frame
- Better steering
- Leveller
- Straight row
- Lower torsion on frame

# THE WRAPPERS

## WHY CHOOSING THIS UNIT...



The front traction wheels are hydraulically powered and independent in their movements, providing a total even traction in any given situation.

No chain.

No sprockets.





# THE WRAPPERS

## WHY CHOOSING THIS UNIT...

### Aluminum tensioners only

- Unbeatable even stretching
- Rust and corrosion-free
- Proven technology





**Since our brains,  
mine at least,  
are limited,  
lets have a minute  
to digest this stuff.**



# THE WRAPPERS

## What's in it for me ?



100% MANUAL over  
HYDRAULIC

DOUBLE PLASTIC ON  
DEMAND

RAM PUSHER  
SYSTEM

UP TO 120 BALES HR

**STRAITLINER**



100% AUTOMATIC or  
MANUAL over  
HYDRAULIC

REMOTE CONTROLLED

DOUBLE PLASTIC ON  
DEMAND

RAM PUSHER  
SYSTEM

UP TO 120 BALES HR

**TOPLINER**



100% AUTOMATIC or  
MANUAL over  
HYDRAULIC

REMOTE CONTROLLED

DOUBLE PLASTIC ON  
DEMAND

RAM PUSHER  
SYSTEM

UP TO 160 BALES HR

**PROLINER**



100% AUTOMATIC or  
MANUAL over  
HYDRAULIC

REMOTE CONTROLLED

DOUBLE PLASTIC ON  
DEMAND

RAM PUSHER  
SYSTEM

UP TO 160 BALES HR

**ALLLINER**

# STRAITLINER

IN-LINE ROUND BALE



Bale diametre :  
4' to 5'6"



Bale size :  
4' to 5'



2 men operation



RAM System



14HP SUBARU

Dealer can apply to be authorized  
reseller and part dealer.

OPTIONAL

Night lights  
Road lights  
2 add. tensionners

DOUBLE  
PLASTIC ON  
DEMAND

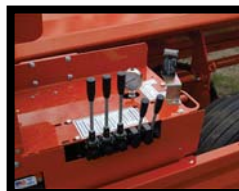
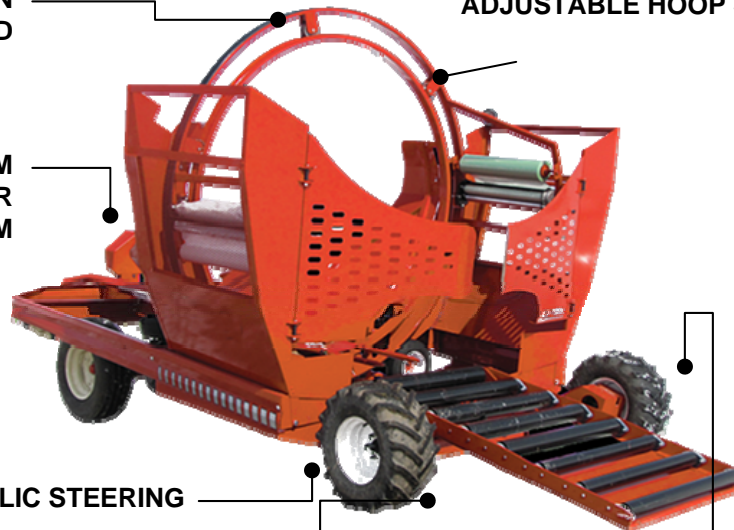
ADJUSTABLE HOOP SPEED

RAM  
PUSHER  
SYSTEM

HYDRAULIC STEERING

HYDRAULIC FORWARD AND  
BACKWARD

INDEPENDANT TRACTION  
WHEELS



# TOPLINER

## IN-LINE ROUND BALE



Bale diametre :  
4' to 5'6"



Bale size :  
4' to 5'



1 men operation



RAM System



14HP SUBARU

Dealer can apply to be authorized  
reseller and part dealer.

### OPTIONAL

Night lights  
Road lights  
2 add. tensionners

✓ DOUBLE  
PLASTIC ON  
DEMAND

✓ REMOTE  
START AND  
STOP

✓ HYDRAULIC  
STEERING

✓ HYDRAULIC  
FORWARD  
AND  
BACKWARD



✓ ADJUSTABLE  
HOOP SPEED

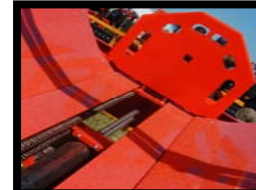
✓ RAM PUSHER  
SYSTEM

✓ AUTOMATIC OR  
MANUAL

✓ INDEPENDANT  
TRACTION  
WHEELS



✓ REMOTE DOUBLE  
PLASTIC



# PROLINER

IN-LINE ROUND BALE



Bale diametre :  
4' to 5'6"



Bale size :  
4' to 5'



1 men operation



RAM System



14HP SUBARU

Dealer can apply to be authorized  
reseller and part dealer.

## INCLUDED

Night lights  
Road lights  
2 years warranty

## OPTION

2 additional tensionners  
Turbo Kit (180 bales/hr)

✓ DOUBLE  
PLASTIC ON  
DEMAND

✓ REMOTE BALE  
EJECTION

✓ ADJUSTABLE  
HOOP SPEED

✓ RAM PUSHER  
SYSTEM

✓ REMOTE  
START AND  
STOP

✓ REMOTE  
HYDRAULIC  
STEERING

✓ HYDRAULIC  
FORWARD  
AND  
BACKWARD

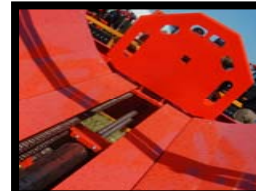
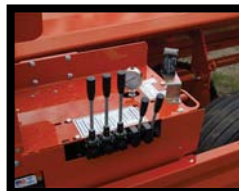
✓ INDEPENDANT  
TRACTION  
WHEELS

✓ REMOTE  
UP AND  
DOWN

✓ REMOTE  
START &  
STOP

✓ AUTOMATIC OR  
MANUAL

✓ REMOTE DOUBLE  
PLASTIC





# ALLLINER

## IN-LINE ROUND & SQUARE BALE



Bale diameter :  
4' to 5'6"



Bale size :  
4' to 5'



1 men operation



RAM System



14HP SUBARU

Dealer can apply to be authorized  
reseller and part dealer.

### INCLUDED

Night lights  
Road lights  
2 years warranty  
4 tensioners

### OPTION

Turbo Kit (180 bales/hr)

✓ DOUBLE  
PLASTIC ON  
DEMAND

✓ REMOTE BALE  
EJECTION

✓ ADJUSTABLE  
HOOP SPEED

✓ RAM PUSHER  
SYSTEM

✓ REMOTE  
START AND  
STOP

✓ REMOTE  
HYDRAULIC  
STEERING

✓ HYDRAULIC  
FORWARD  
AND  
BACKWARD

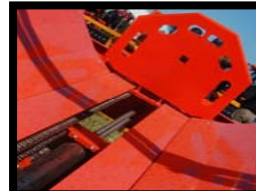
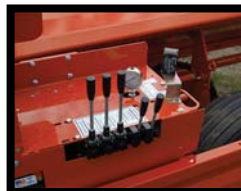
✓ INDEPENDANT  
TRACTION  
WHEELS

✓ REMOTE  
UP AND  
DOWN

✓ REMOTE  
START &  
STOP

✓ AUTOMATIC OR  
MANUAL

✓ REMOTE DOUBLE  
PLASTIC





**My cousin  
would  
sure take  
a short  
brake  
here ...**



# SL TRAILER

## ROUND BALE SELF LOADING TRAILER

- For silage or dry hay.
- Can handle 4' to 6' diameter bales.
- Option of third row loading arm.
- Choice of electric or manual controls.
- Several models available.



# SL TRAILER

## ROUND BALE SELF LOADING TRAILER

MODEL	SLT10	SLT12	SLT16
	Standards tires 16.5L16.1 with wheels W14C16.1 (280 x 404 mm)		---
Total capacity 12 tons <sup>1</sup> (GVWR):			---
Total capacity 16 tons <sup>1</sup> (GVWR):	---	Optionals tires 21.5L16.1 with wheels W16C16.1 (403 x 404 mm)	Optionals tires 21.5L16.1 with wheels W16C16.1 (403 x 404 mm)
Total capacity 20 tons (GVWR):	---		Optionals tires 21.5L16.1 with wheels W16C16.1 (403 x 404 mm)
Total capacity 20 tons (GVWR)	---		Optionals tires 500/45-22.5 with W16C16.1 (403 x 404 mm)
Sides adjustable to bales diameter:	4' to 5 1/2' std. (6' opt.) • 1.2 m to 1.7 m std. (1.8 m opt.)		
Bales lenght:	4' to 5 1/2' std. • 1.2 m to 1.7 m std.		
Wheels (number of bolts):	8 bolts		
Number of bales 4' (1.2 m) long:	Std. 10 (2 rows of 5 bales)	Std. 12 (2 rows of 6 bales)	Std. 16 (2 rows of 8 bales)
	opt. add 1 row of 4 bales	opt. add 1 row of 5 bales	opt. add 1 row of 7 bales
Number of bales 5' (1.5 m) long:	Std. 8 (2 rows of 4 bales)	Std. 10 (2 rows of 5 bales)	Std. 12 (2 rows of 7 bales)
	opt. add 1 row of 3 bales	opt. add 1 row of 4 bales	opt. add 1 row of 6 bales
Overall length:	27'6" • 8.38 m	31'10" • 9.7 m	39'10" • 12.14 m
Overall width:	8'6" to 10'0" • 2.59 m to 3.05 m		
Plarform height:	44 5/8" • 1 133 mm (std. tires)	45 1/2" • 1 156 mm (std. tires)	47 1/4" • 1 200 mm (std. tires)
	---	47 1/4" • 1 200 mm (opt. tires)	47 1/4" • 1 200 mm (opt. tires)
Dumping angle:	35°		

# SL TRAILER

ROUND BALE SELF LOADING TRAILER

MODEL	SLT10		SLT12		SLT16	
Tread width (c/c):	83 1/2" • 2 121 mm		80 1/2" • 2 045 mm			
Hitch weight (empty):	1 500 lb approx. • 681 kg approx.		1 800 lb approx. • 818 kg approx.		2 800 lb approx. • 1 270 kg approx.	
Swivel hitch:	Standard					
Control box with automatic						
return of bale ram:	Not available	Standard	Not available	Standard	Not available	Standard
Axle:	Tandem					
Hub (capacity):	8 000 lb • 3 636 kg		10 000 lb • 4 545 kg			
Spindles (diameter):	3" • 73 mm		3 1/4" • 83 mm			
Recommended tractor:	80 HP		100 HP		125 HP	
Total weight:	6 500 lb approx.		7 500 lb approx.		10 500 lb approx.	
	(2 948 kg approx.)		(3 402 kg approx.)		(4 763 kg approx.)	

PRINTED IN CANADA

# SL TRAILER

ROUND BALE SELF LOADING TRAILER



Remote The bales are picked up in the same direction as the baler with our Patented loading arm for quick loading without stopping.



The loading arm is extra strong and designed to handle either dry or high moisture bales.



# SL TRAILER

ROUND BALE SELF LOADING TRAILER



The fork is designed to place the bale easily in the perfect position to be loaded efficiently.

The fork is also designed to gently turn and lift the bale so it does not tear the net.



The fork is built to minimize contact with the net wrap.

Plow bolts are used to build the arm and fork to eliminate the possibility of snagging.

# SL TRAILER

## ROUND BALE SELF LOADING TRAILER

Made out of round tubing, there are no sharp corners on the bends and curves of the fork so it doesn't break the bale.

The arm is able to pick-up bales even if the ground is uneven as the arm goes below 0 degrees, helpful for the first pass when close to a ditch.

If, for whatever reason, you happen to miss a bale, you can back-up and still keep the fork down.

The rounded design of the fork will prevent the fork from digging into the ground, hence minimizing risk of damaging the field.





# SL TRAILER

ROUND BALE SELF LOADING TRAILER



There is a travel safety pin on the loading arm for traveling or to hold the arm in its storage position.



There is a simple safety device that protects the loading arm and the bale pusher from coming into contact.



It requires only one double action hydraulic valve.

# SL TRAILER

ROUND BALE SELF LOADING TRAILER



Side rails will hold the bale in place while loading.



Rails or guides help bales to take their position even if they are not properly shaped.

# SL TRAILER

ROUND BALE SELF LOADING TRAILER



Rails exceed the length of the deck to secure the bales on the back portion of the trailer assuring stability in transport.

Requires only one man to adjust the side rails for bale size and transport.

The bale pusher carriage has an heavy duty rolling system.

In the waiting position, the bale pusher gets offset beyond the front of the deck to permit a maximum clearance for bales being loaded.

The retracting action of the bale pusher is adjustable simply by moving a pin.



# SL TRAILER

## ROUND BALE SELF LOADING TRAILER

A swivel hitch prevents twisting when traveling on uneven terrain.

The attachment block is adjustable, so the machine is always level.

The hitch bracket is built to receive either the swivel hitch or a pintle hitch.



Hook to install safety chain.

The tongue with a « V » shape has a minimal angle to permit a better turning radius.

Block is adjustable.



# SL TRAILER

ROUND BALE SELF LOADING TRAILER



Use of wide tires mounted on a tandem axle.

Standard set of tires.

The offset tandem allows more flexibility on rough terrain.

The bale handlers are adapted to work on rough and hilly terrain.

Machine will work with different sizes of bale without changing the initial setup.

Choices of automatic hydraulic over electric controls or a simple manually controlled hydraulic system.

# SL TRAILER

ROUND BALE SELF LOADING TRAILER



## PRODUCT KNOWLEDGE SESSION



# SL TRAILER

ROUND BALE SELF LOADING TRAILER



- The front part of the deck has two levels, higher on the entry side which prevent the first bale loaded from rolling back onto the entry side of the deck. The side rails hold the bales on the deck and are also a security device.
- The design of the deck limits friction on the bales, so it doesn't tear the net on the bales.
- Weight bracket available for heavier bales to keep equipment straight.
- Signal lights and reflectors are standard.
- Full load indicator insures bringing back a full load without having to count bales.

# SL TRAILER

ROUND BALE SELF LOADING TRAILER

Fully hydraulic  
dumping system.

No chain  
to damage the bales.

With the steep tilt,  
the bales just  
slide off by gravity.



# SL TRAILER

ROUND BALE SELF LOADING TRAILER

## Competition wise...



Lower risk of injury and lower maintenance with chains.

Different working terrain .

Safety (rails and lights).

Robustness of the machine.

Swivel hitch versus rigid.

# SL TRAILER

ROUND BALE SELF LOADING TRAILER



## PRODUCT KNOWLEDGE SESSION

# SL TRAILER

ROUND BALE SELF LOADING TRAILER





# SL TRAILER

ROUND BALE SELF LOADING TRAILER



	P7400
Qty of bale 32" X 36" X 60" à 66"	18
Qty of bale 32" X 36" X 68" à 80"	15
Qty of bale 32" X 36" X 80" à 102"	12
Qty of bale 24" X 48" X 60" à 72"	10
Qty of bale 24" X 48" X 80" à 102"	8
Qty of bale 36" X 48" X 60" à 72"	10
Qty of bale 36" X 48" X 80" à 102"	8
Qty of bale 48" X 48" X 60" à 72"	10
Qty of bale 48" X 48" X 80" à 102"	8

# SL TRAILER

ROUND BALE SELF LOADING TRAILER



	P7800
Qty of bale 32" X 36" X 60" à 66"	36
Qty of bale 32" X 36" X 72" à 80"	30
Qty of bale 32" X 36" X 84" à 102"	24
Qty of bale 24" X 48" X 60" à 66"	24
Qty of bale 24" X 48" X 72" à 80"	20
Qty of bale 24" X 48" X 84" à 102"	16
Qty of bale 36" X 48" X 60" à 66"	24
Qty of bale 36" X 48" X 72" à 80"	20
Qty of bale 36" X 48" X 84" à 102"	16
Qty of bale 48" X 48" X 60" à 66"	12
Qty of bale 48" X 48" X 72" à 80"	10
Qty of bale 48" X 48" X 84" à 102"	8

# SL TRAILER

ROUND BALE SELF LOADING TRAILER

- Allows you to pick up the bales while moving up to 12 mph.
- Approximately 12 minutes to load 36 bales.
- Unloads in less than 2 minutes.
- Easily adjustable for bales 5' to 8' long.
- Carries up to 36 bales depending on their dimensions (3'x3', 3'x4', 4'x4').

# SL TRAILER

ROUND BALE SELF LOADING TRAILER

- Requires only one operator to load and transport the bales.
- Full load indicator.
- Wide opening area to pick up bale.
- The P-7800 uses an articulated tongue to easily align with bale and to get the load more balanced while starting up loading.
- P-7800 working light integrated to view the arm when working at night.

# SL TRAILER

ROUND BALE SELF LOADING TRAILER

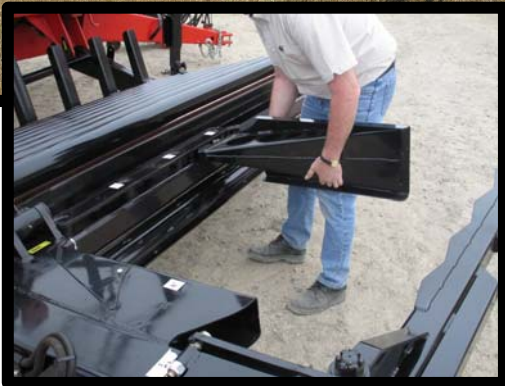


- The P-7400 unloads only by gravity (dumping) with an angle of 47°.
- On the P-7800, the hydraulic bale pusher goes all the way to the back of the deck and uses a minimal dumping angle to lessen the risk of upsetting the bales.
- Picks up bales in the same direction as the baler travels in the field.



# SL TRAILER

ROUND BALE SELF LOADING TRAILER



Places the bale on the flat, so twine is on top, water hardly penetrates into the bale when stacking outside.

Option for wider tires for the P-7400M model when working on soft ground conditions.

Loading arm is patented and fully adjustable to handle various bale sizes

(3' x 3', 3' x 4', 2' x 4', 4' x 4').

Handles bale length from 5 to 8 feet, adjustment is manual, quick and no tools are needed.

# SL TRAILER

## ROUND BALE SELF LOADING TRAILER

The function of the clamp on the loading arm is an automatic sequence.

The hydraulic sequence functions are easy to use.

Rails assure safe loading and also safer travelling when loaded.

Hydraulic jack available as an option.

The dumping system allows the bales to stay tightly grouped when unloading.

The adjustable swivel hitch allows the trailer to rock without putting too much strain on the tractor drawbar.



# SL TRAILER

ROUND BALE SELF LOADING TRAILER



# SL TRAILER

## ROUND BALE SELF LOADING TRAILER

MODEL	P-6810M	P-6810	P-6812M	P-6812	P-6816M	P-6816
	Standards tires 16.5L16.1 with wheels W14C16.1 (280 x 404 mm)				---	
Total capacity 12 tons <sup>1</sup> (GVWR):						
Total capacity 16 tons <sup>1</sup> (GVWR):	---		Optionals tires 21.5L16.1 with wheels W16C16.1 (403 x 404 mm)		Optionals tires 21.5L16.1 with wheels W16C16.1 (403 x 404 mm)	
Total capacity 20 tons (GVWR):	---				Optionals tires 21.5L16.1 with wheels W16C16.1 (403 x 404 mm)	
Total capacity 20 tons (GVWR):	---				Optionals tires 500/45-22.5 with W16C16.1 (403 x 404 mm)	
	---					
Sides adjustable to bales diameter:	4' to 5 1/2' std. (6' opt.) • 1.2 m to 1.7 m std. (1.8 m opt.)					
Bales length:	4' to 5 1/2' std. • 1.2 m to 1.7 m std.					
Wheels (number of bolts):	8 bolts					
Number of bales 4' (1.2 m) long:	Std. 10 (2 rows of 5 bales)		Std. 12 (2 rows of 6 bales)		Std. 16 (2 rows of 8 bales)	
	opt. add 1 row of 4 bales		opt. add 1 row of 5 bales		opt. add 1 row of 7 bales	
Number of bales 5' (1.5 m) long:	Std. 8 (2 rows of 4 bales)		Std. 10 (2 rows of 5 bales)		Std. 12 (2 rows of 6 bales)	
	opt. add 1 row of 3 bales		opt. add 1 row of 4 bales		opt. add 1 row of 6 bales	
Overall length:	27'6" • 8.38 m		31'10" • 9.7 m		39'10" • 12.14 m	
Overall width:	8'6" to 10'0" • 2.59 m to 3.05 m					
Platform height:	44 5/8" • 1 133 mm (std. tires)		45 1/2" • 1 156 mm (std. tires)		47 1/4" • 1 200 mm (std. tires)	
	---		47 1/4" • 1 200 mm (opt. tires)		47 1/4" • 1 200 mm (opt. tires)	
Dumping angle:	35°					
Tread width (c/c):	83 1/2" • 2 121 mm		80 1/2" • 2 045 mm			
Hitch weight (empty):	1 500 lb approx. • 681 kg approx.		1 800 lb approx. • 818 kg approx.		2 800 lb approx. • 1 270 kg approx.	
Swivel hitch:	Standard					
Control box with automatic return of bale ram:	Not available	Standard	Not available	Standard	Not available	Standard
Axle:	Tandem					
Hub (capacity):	8 000 lb • 3 636 kg		10 000 lb • 4 545 kg			
Spindles (diameter):	3" • 73 mm		3 1/4" • 83 mm			
Recommended tractor:	80 HP		100 HP		125 HP	
Total weight:	6 500 lb approx.		7 500 lb approx.		10 500 lb approx.	
	(2 948 kg approx.)		(3 402 kg approx.)		(4 763 kg approx.)	



*Thank you for your time and  
patience...*